

LOGICA MICRO

Numerically controlled pad printing machine for multicolour printing with high mechanical cadence

Fully electrical operation

Ideal for the installation on production lines or for special plants

CHARACTERISTICS

- All the mechanical movements are motorized via numerical control, guarantee high precision providing complete flexibility of operation and simplicity without compromise.
- Its exclusive electric operation presents a considerable advantage compared to an equivalent pneumatic machine.
- Manufactured from light alloy and special steel.
- Eco-friendly. Due to its available hermetic ink system preventing solvent evaporation.
- Independent adjustment of speeds to each of the six strokes, ability to memorize the different and most important phases of the printing cycle.
- Changeover time reduced to a few minutes, thanks to the considerations given in the design concept to apply ergonomic principles to the system.
- Due to the mechanical design quality, a guaranteed smooth working function results in an extremely quiet action, thus allowing use in any environment.
- Ability to print under the printing plate, allowing decoration in every position on the large sized objects.
- The manufacturing it was also conceived to guarantee a long life of working without maintenance.
- All adjustment functions can be carried out via the numeric keyboard with alphanumeric display.
- Countdown function and memory of all different work programs for easy set up.
- Ability to print on different surface levels of the same object, adjusting easily the stroke through the keyboard.



TECHNICAL DATA

- | | |
|--|---|
| • Operation:
electric with numerical control | • Standard ink cup sizes:
up to 5 dia. 90 mm, or 3 dia. 115 mm |
| • Printing force:
3000 N | • Vertical stroke:
100 mm |
| • Maximum printing speed:
adjustable up to 5000 c/h(*) | • Maximum pad height:
100 mm |
| • Number of colours:
1 - 2 - 3 - 4 - 5 | • AC supply:
220/240 V - single phase - 50/60 Hz |
| • Maximum dia. ink cup:
115 mm | • Average consumption and weight (basic model):
about 600 W
about 150 Kg (with kit for instal. on prod. line) |

(*) The above mentioned printing speed is the max achievable and will reduce when the vertical pad stroke is increased or when delay times have been programmed into the cycle. The maximum printing speed also depends on the parts loading device.

LOGICA MICRO

SERIE LOGICA HIGH SPEED

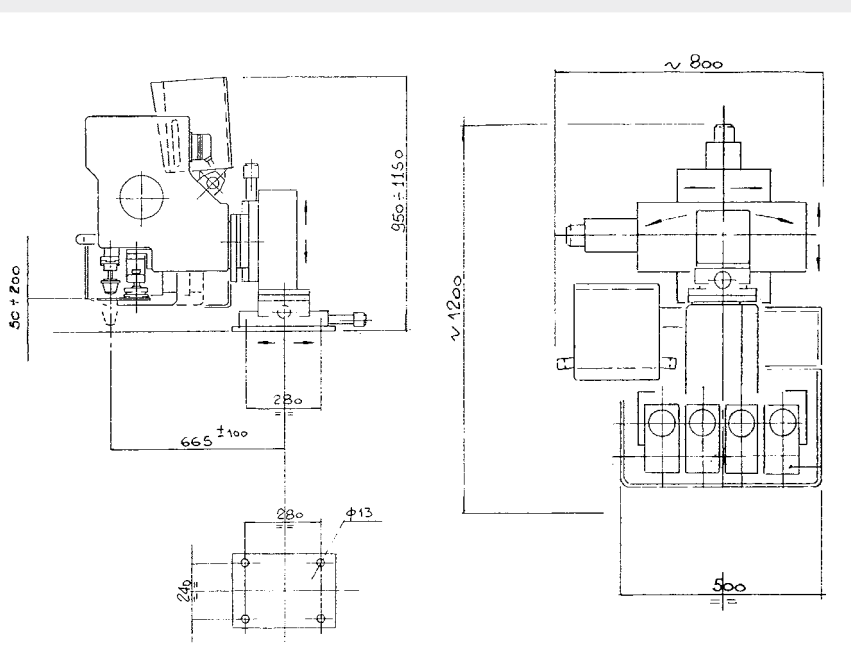


5 Logica Micro installed on a production line

OPTIONAL

- Kit for installation on production line.
- Floor stand with adjustable height table.
- Cross tables.
- Rotary tables.
- Oval flat conveyors.
- Rectilinear tracked conveyors.
- Pads pre-drying devices.
- Automatic pad cleaning devices.
- Pre- and post- superficial treatment devices.

SIZE BASIC MODEL WITH KIT FOR INSTALLATION ON PRODUCTION LINE



Fully automatic plant for caps printing up to 36.000 pcs/h

